

Listing Agents:

Cindy Snell, SEC
(806) 776-1272

csnell@westarrealty.com

One of the few remaining parcels
in this size, in this prime area



5513 114th Street, Lubbock, TX

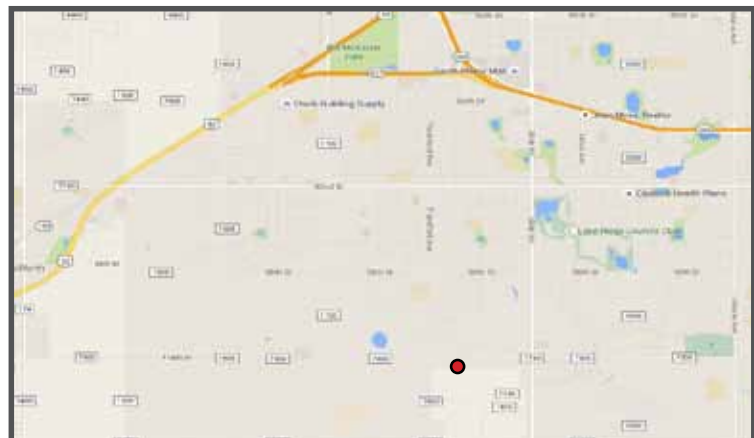
Sales Price: \$375,000.00

Size: 3.352 Acres

Zoning: Residential

Located in the Path of Progress

- * Great Location
- * Path of Progress
- * Pecan Orchard to the East
- * **Seller will clear parcel prior to closing**
- * Septic and Well with 1.5 HP pump
- * 20' easement on East side for owners to the South
- * Minimum \$15,000 earnest money



806.797.3231

4415 71st, Suite 12 • Lubbock, TX 79424 • 806 793-2130 (Fax)

EVEN though the material in this sales package was gathered from resources deemed reliable, WESTAR COMMERCIAL REALTY, INC. and/or its sales agents, do not take responsibility for any errors or omissions. The sales package is subject to withdrawal or price change without notice.

